

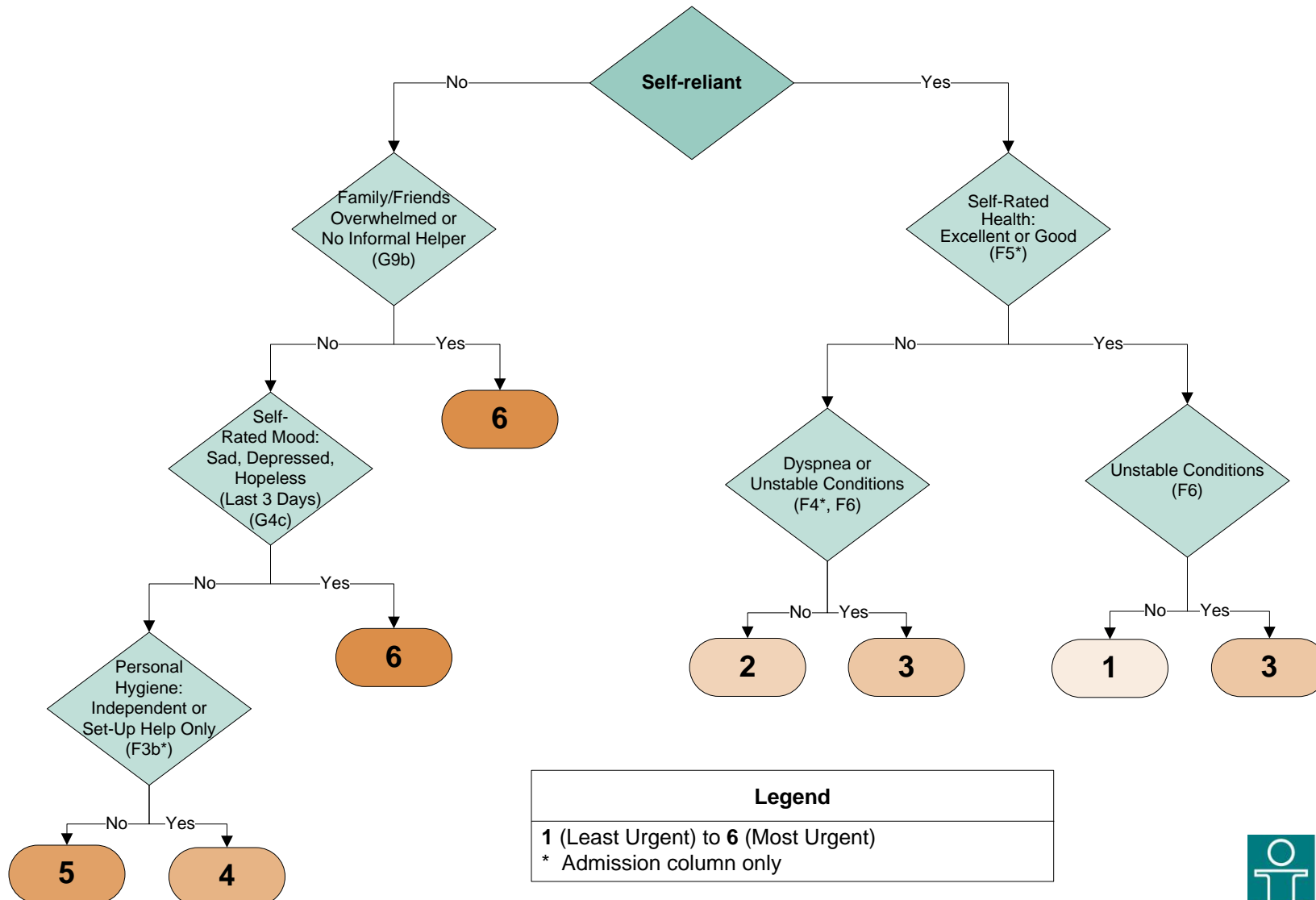


# Examining the Assessment Urgency Algorithm

Used with the interRAI CA, *Emergency Department Screener*

Used to prioritize referrals to home care agencies or specialized geriatric services for comprehensive follow-up, e.g. RAI-Home Care. Predictive of being admitted to hospital and being a long-stay patient or designated as an alternate level of care (ALC).

<b>Self-reliance Index</b>	
Self-reliant	0 = Yes
Impaired	1 = No



<b>Legend</b>
1 (Least Urgent) to 6 (Most Urgent)
* Admission column only