

Using the interRAI CA, Intake From Community/ Hospital Personal Support (PS) Algorithm as a Decision-Support Tool

Job Aid | April 2021



What is the PS Algorithm?

The Personal Support (PS) Algorithm is a decision-support tool that can be used to prioritize those needing community-based services and to prioritize the allocation of resources.

It provides a framework for allocating personal support services.

How does it work?

The PS Algorithm score ranges from 1 to 6. Higher scores indicate greater need for personal support care.

Regardless of the exact attributes used, all persons who fall into the same group have a similar need for personal support services.

What are the benefits?

Clinical

- Identifies attributes that contribute to personal support received
- Helps with the development of care plans

Organizational

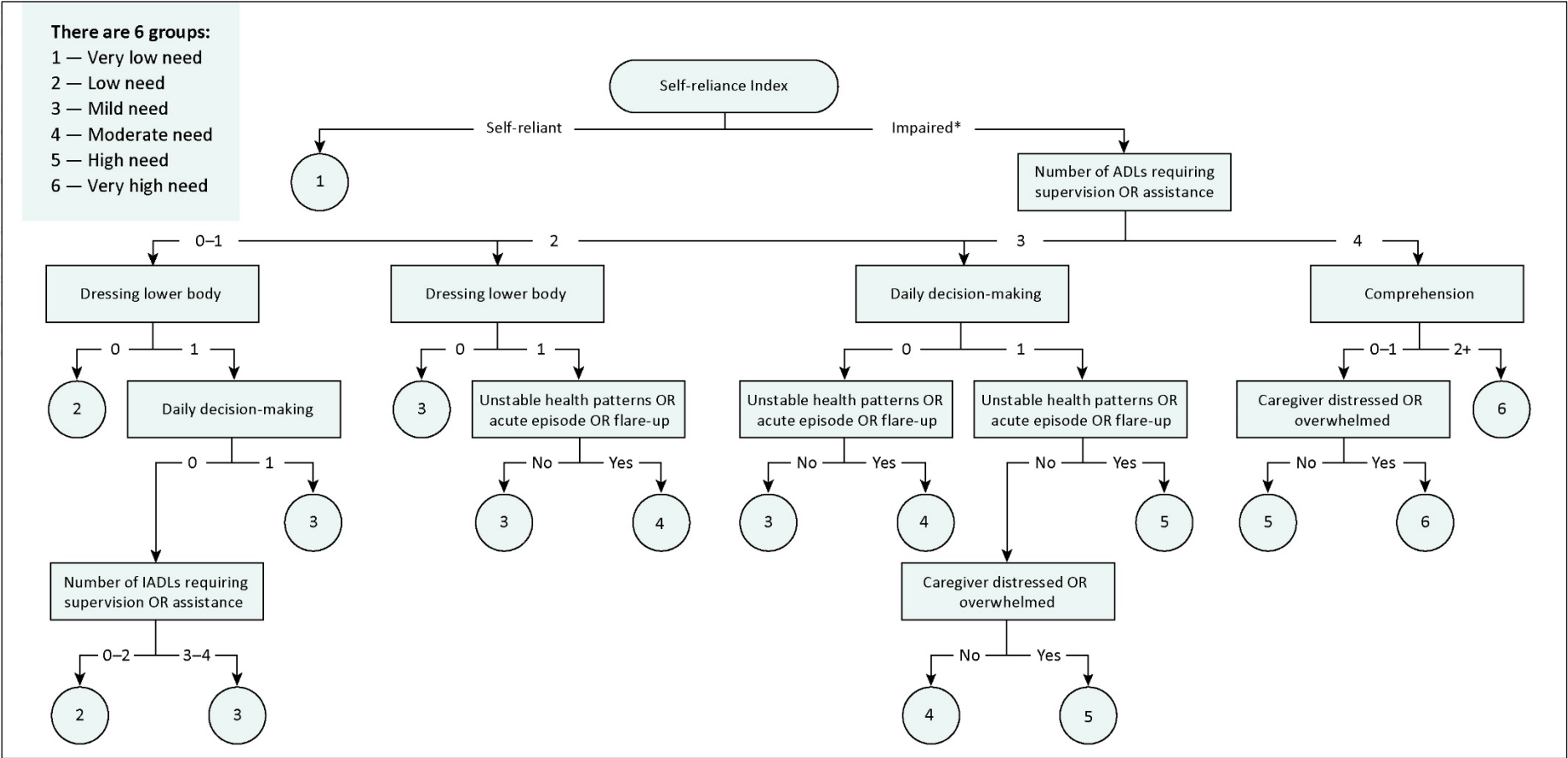
- Promotes consistent decisions among home care staff
- Supports evidence-informed personal support resource allocation

What are the criteria used to calculate the PS score?

- Cognitive skills for daily decision-making (C1)
- Bathing — activity of daily living (ADL) self-performance (C2a)
- Personal hygiene — ADL self-performance (C2b)
- Dressing lower body — ADL self-performance (C2c)
- Locomotion — ADL self-performance (C2d)
- Conditions/diseases make cognitive, ADL, mood or behaviour patterns unstable (fluctuating, precarious or deteriorating) (C5a)
- Experiencing an acute episode or a flare-up of a recurrent or chronic problem (C5b)
- Ability to understand others (Comprehension) (D2)
- Meal preparation — instrumental activity of daily living (IADL) capacity (D4a)
- Ordinary housework — IADL capacity (D4b)
- Managing medications — IADL capacity (D4c)
- Stairs — IADL capacity (D4d)
- Primary informal helper expresses feelings of distress, anger or depression (D20a)
- Family/close friends report feeling overwhelmed by person's illness (D20b)
- Self-reliance Index

PS decision tree

Personal Support (PS) Algorithm Used with the interRAI CA, Intake From Community/Hospital



Note

* Person is impaired if ANY of the following applies:

- Modified independent or any impairment in cognitive skills for daily decision-making
- Received supervision or any physical assistance in bathing, personal hygiene, dressing lower body and/or locomotion

Source

Adapted from Sinn CJ, et al. [Derivation and validation of the personal support algorithm: An evidence-based framework to inform allocation of personal support services in home and community care](#). *BMC Health Services Research*. November 2017.

How to cite this document:

Canadian Institute for Health Information. *Using the interRAI CA, Intake From Community/Hospital Personal Support (PS) Algorithm as a Decision-Support Tool*. Ottawa, ON: CIHI; 2021.