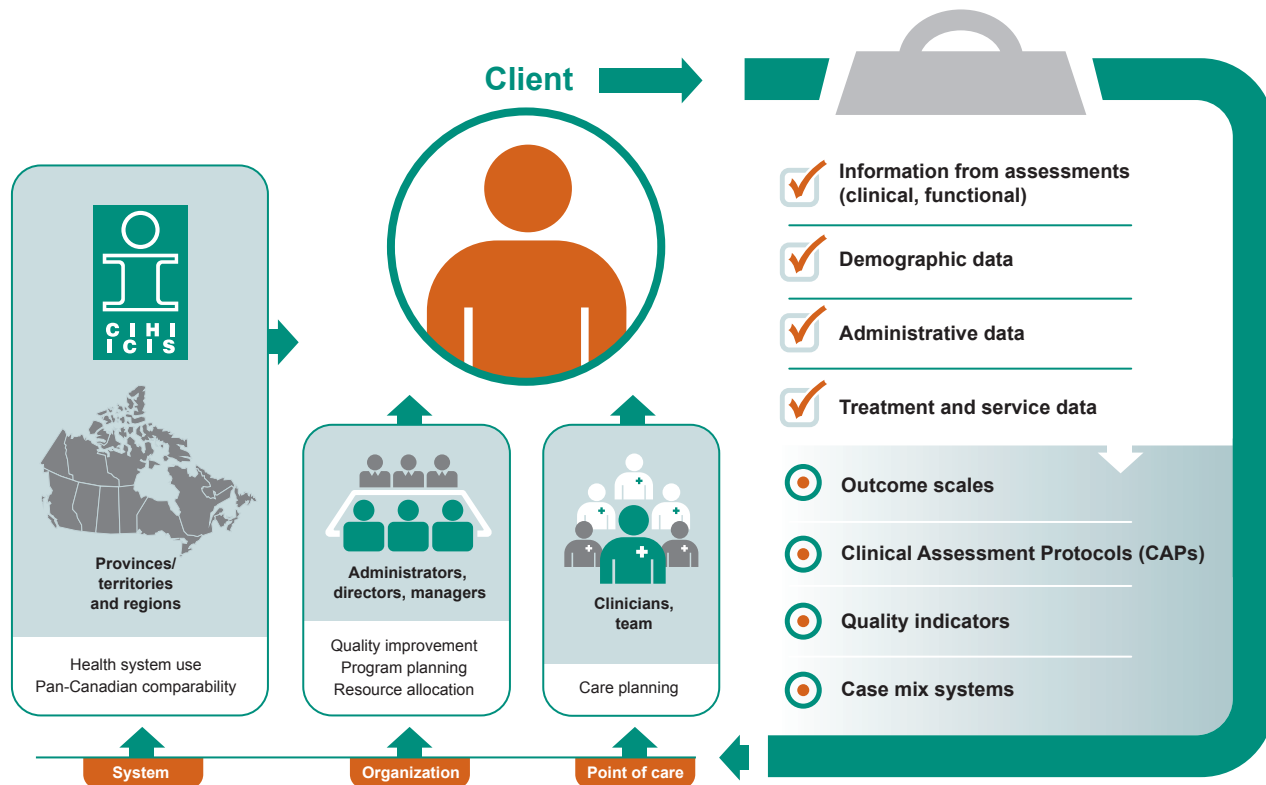


Home Care Reporting System and RAI–Home Care

Overview

The Home Care Reporting System (HCRS) — 1 of 31 data holdings of the Canadian Institute for Health Information (CIHI) — collects and reports data from the Resident Assessment Instrument–Home Care (RAI-HC)©. This standardized clinical assessment was developed by [interRAI](#), a not-for-profit international research network committed to improving care for people with complex medical needs.

The RAI-HC assessment instrument is designed to be used with adults in home and community-based settings. Along with administrative, demographic and resource utilization data, the RAI-HC data collected from publicly funded home care programs is submitted to HCRS and made available across Canada for planning and monitoring care, understanding populations, improving quality and allocating resources.



Measures available through HCRS

Outcome scales

Person-level measures of clinical and functional status. Examples include

- Depression Rating Scale
- Cognitive Performance Scale
- Changes in Health, End-Stage Disease and Signs and Symptoms (CHESS)

Clinical Assessment Protocols (CAPs)

Person-level reports that identify areas where there is risk of decline or potential to improve. Examples include

- Activities of Daily Living
- Cognitive Loss
- Falls
- Informal Support

Quality indicators

Organization-level measures of quality across key domains, including safety, health status, appropriateness and effectiveness. Examples include

- Continued Caregiver Distress
- Pain
- Worsened Bladder Continence

Case mix systems

Organization-level reports that group clients according to similar clinical characteristics and resource use. Resource Utilization Group (RUG) categories include

- Special Care
- Impaired Cognition
- Behaviour Problems
- Reduced Physical Function

Accessing HCRS data

Publicly available

Jurisdiction-level tables with administrative, clinical and resource use information are available through CIHI's [Quick Stats page](#).

HCRS eReports

HCRS eReports provide submitting organizations with secure, web-based access to comparable jurisdiction-level RAI-HC and related data in a user-friendly, interactive environment.

Data requests

Researchers, decision-makers and health managers can request specific RAI-HC and HCRS data from CIHI at an aggregate or record level to suit their information needs. Interested? Complete and submit the [Data Inquiry Form](#) available on CIHI's website.



For data-specific information:

homecare@cihi.ca

