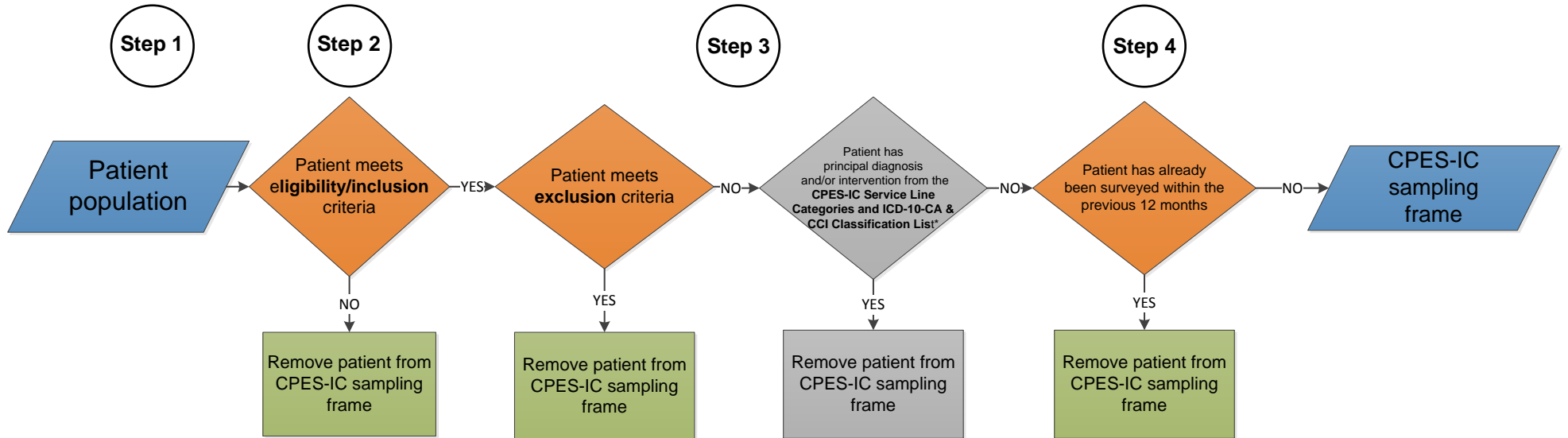
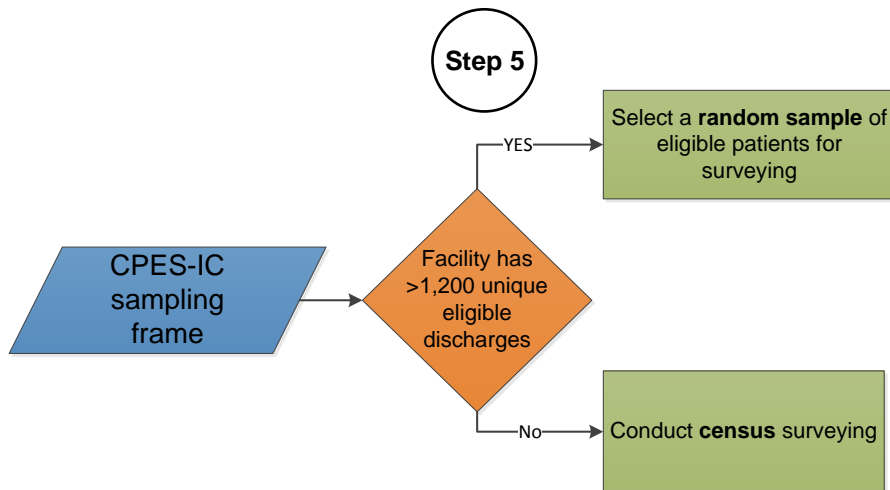


## Canadian Patient Experiences Survey — Inpatient Care (CPES-IC) Sampling Protocol



\* The CPES-IC Service Line Categories and ICD-10-CA & CCI Classification List is currently under review.



### Step 1

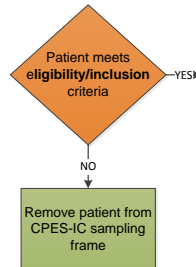
#### Identify patient population



- Identify the **patient population\*** by creating a data file of all discharges within the appropriate time frame (i.e., at least 3 consecutive months).
- The survey package must be mailed by the end of the month following the relevant discharge month but not sooner than 48 hours after discharge.

### Step 2

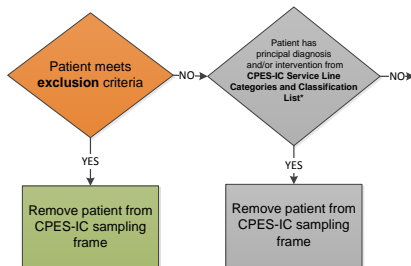
#### Apply eligibility/inclusion criteria



- Use the **eligibility/inclusion criteria\*** to limit the discharge population to eligible cases only.
  - Remove patients who do not meet the eligibility/inclusion criteria from the CPES-IC sampling frame.
- Eligibility/inclusion criteria:
  - 18+ years at the time of admission
  - Alive at discharge
  - Occupied an inpatient bed

### Step 3

#### Apply exclusion criteria

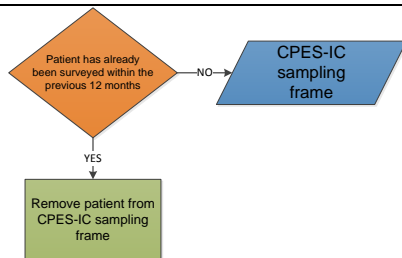


- Use the **exclusion criteria\*** to limit the discharge population to eligible cases only:
  - Remove patients who meet the exclusion criteria from the CPES-IC sampling frame
    - 3a) Use the exclusion criteria in the CPES-IC Procedure Manual.
    - 3b) Then use the **CPES-IC Service Line Categories and ICD-10-CA & CCI Classification List** to identify patients for exclusion based on services received during their hospital stay (currently under review)

Note: In addition to applying exclusion criteria, also remove patients who have incomplete contact information (address, phone number or email address) in this step.

### Step 4

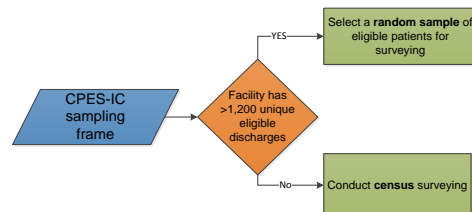
#### Perform de-duplication



- Perform **de-duplication\*** by removing patients from the CPES-IC sampling frame that had been selected for surveying within the same facility in the previous 12 months.

### Step 5

#### Create sampling frame and select sampling methodology



- After applying the inclusion criteria, exclusion criteria, and performing de-duplication in consecutive steps, the final resulting data file will become the CPES-IC sampling frame.
- Various **sampling methodologies\*** can be used to survey patients from the sampling frame, depending on the preferences of the facility and the number of unique eligible discharges from the facility per fiscal year.
  - Option 1: Attempted census (<1,200 unique discharges per fiscal year)<sup>†</sup>
  - Option 2a: Simple random sampling (>1,200 unique discharges per fiscal year)<sup>‡</sup>
  - Option 2b: Stratified Random Sampling<sup>‡</sup>
    - Option 2b (i): Proportionate stratified random sampling
    - Option 2b (ii): Disproportionate stratified random sampling

<sup>†</sup> Option 1: Required sample size for inclusion in public comparative reports: ≥ 100 complete surveys.

<sup>‡</sup> Option 2: Required sample size for inclusion in public comparative reports: ≥ 300 complete surveys.