

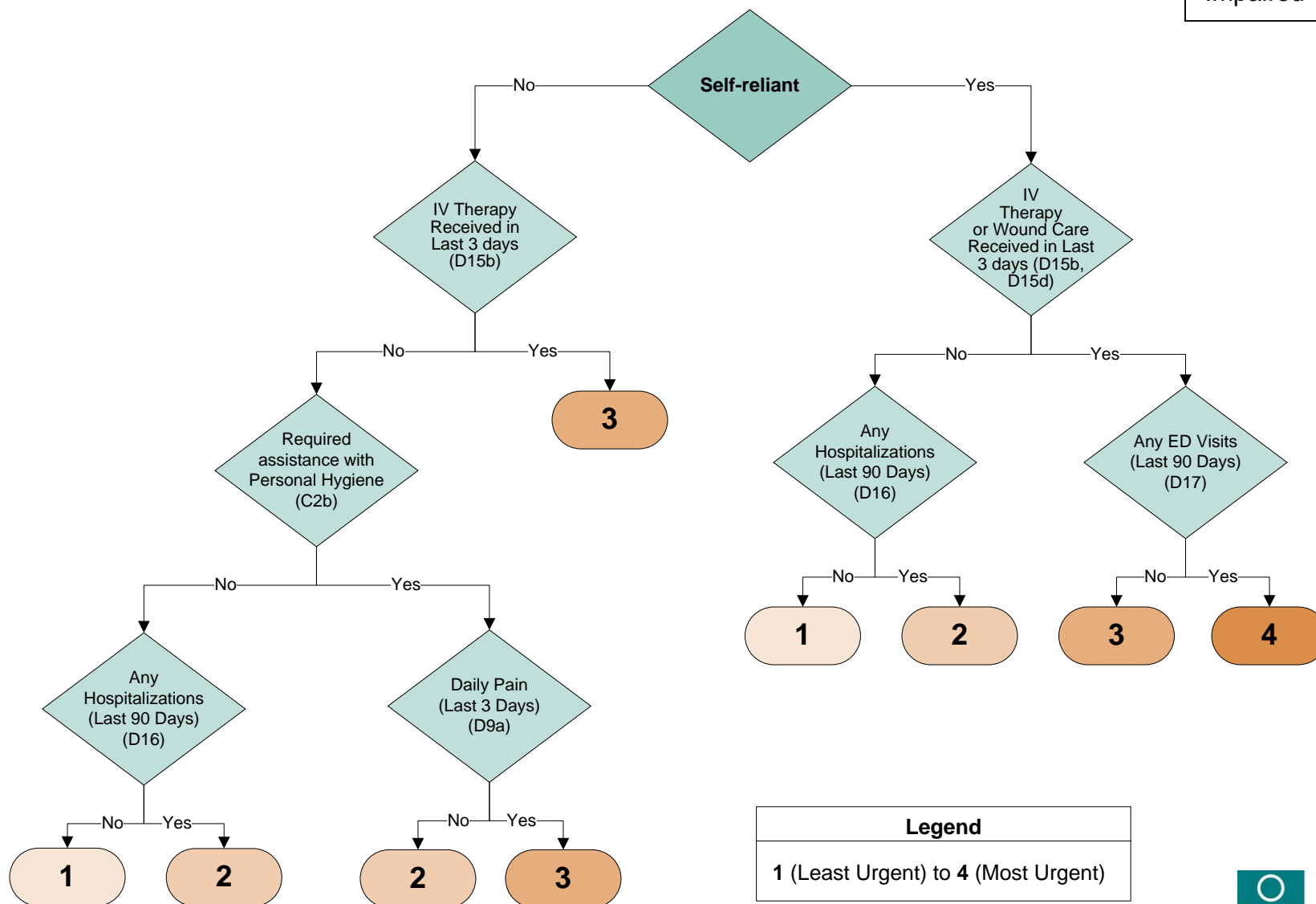


# Examining the Service Urgency Algorithm

Used with the interRAI CA, *Intake From Community/Hospital*

Identifies persons in need of urgent services, e.g. IV therapy or wound care

**Self-reliance Index**  
Self-reliant 0 = Yes  
Impaired 1 = No



**Legend**  
1 (Least Urgent) to 4 (Most Urgent)