

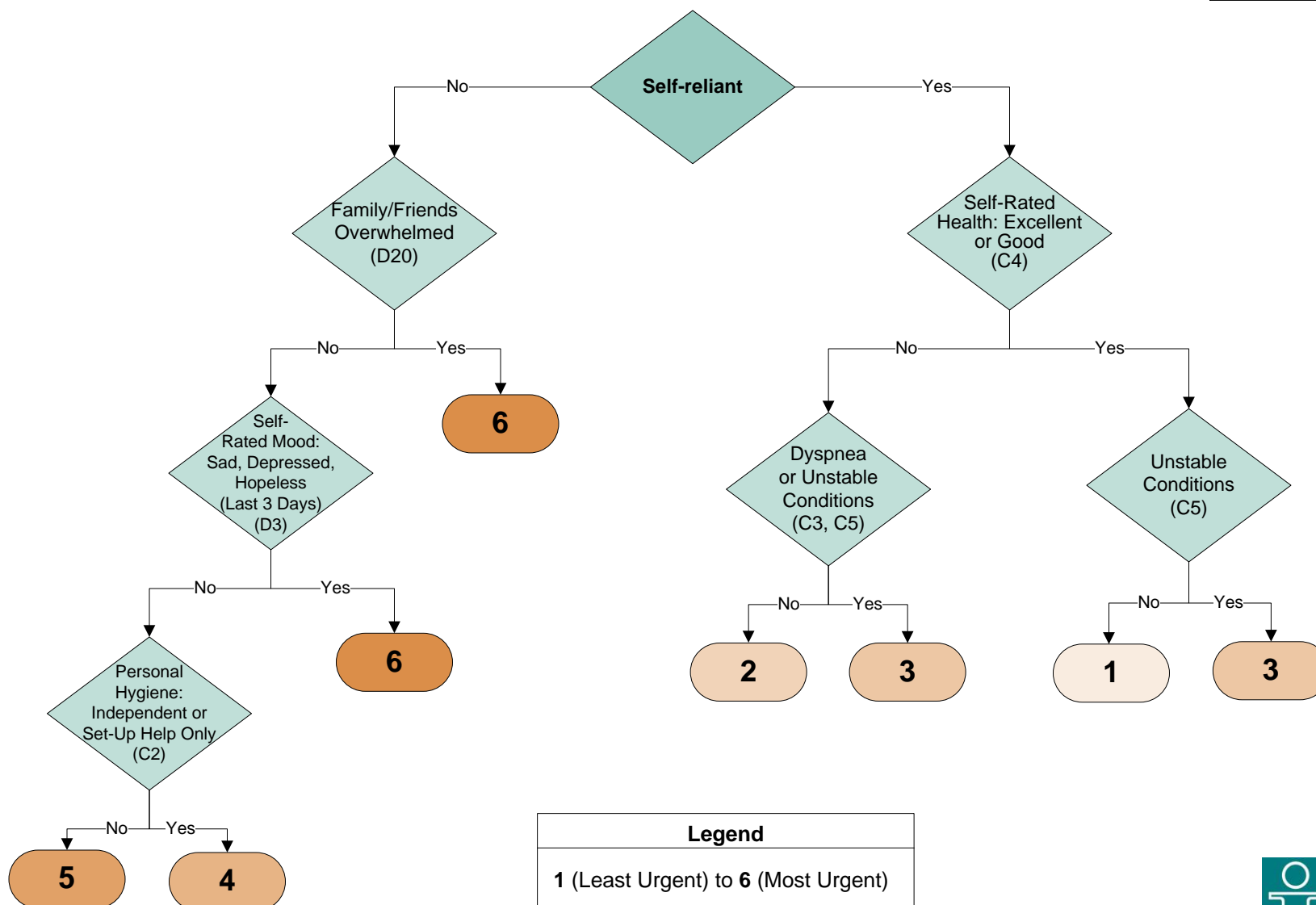


# Examining the Assessment Urgency Algorithm

Used with the interRAI CA, *Intake From Community/Hospital*

Prioritizes need and urgency for comprehensive follow-up assessment, e.g. RAI-HC

**Self-reliance Index**  
Self-reliant 0 = Yes  
Impaired 1 = No



**Legend**  
1 (Least Urgent) to 6 (Most Urgent)